

SPLIT BODY BALL VALVE

FOR GAS & FUELS APPLICATIONS



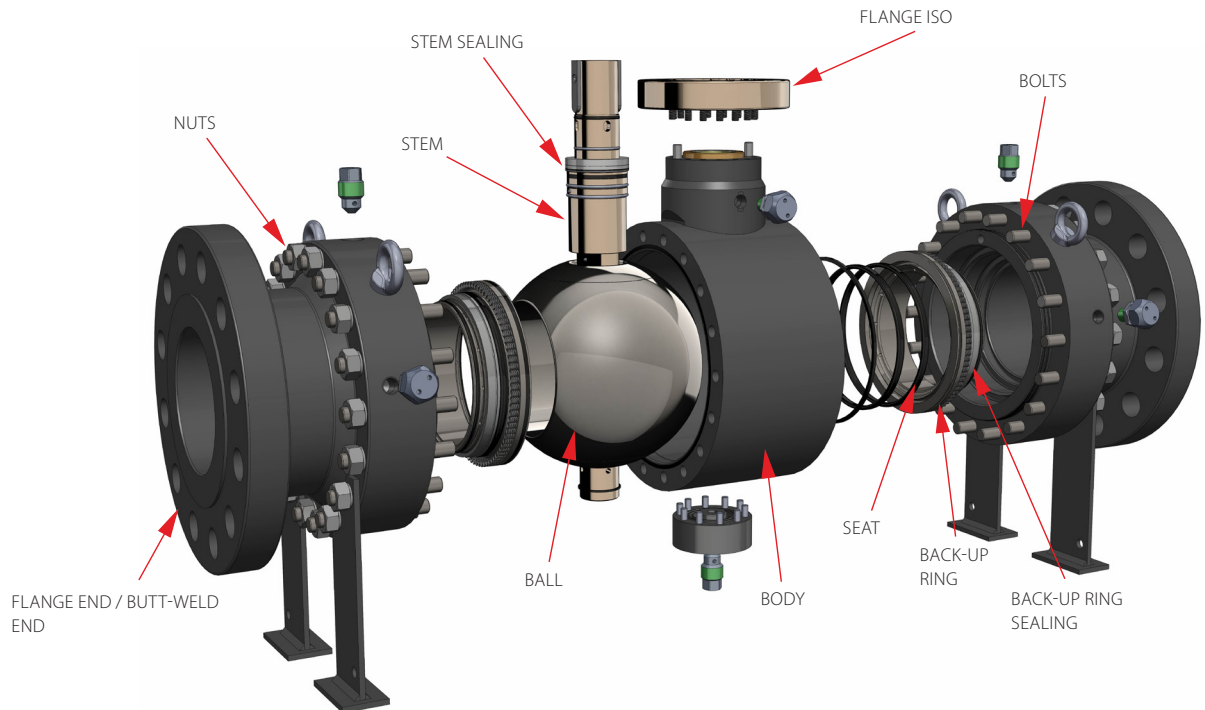
SPLIT BODY BALL VALVE

PN16 | PN25 | PN40

CL 150 | CL 300

DESCRIPTION

	PN	CL
FLANGES (FF)	EN 1092-1	ASME B16.5 / EN 1759-1
LENGHTS (FF)	EN 558 (Series 12) / API-6D	ASME B16.10 / API-6D
BUTT-WELDING ENDS (BW)	EN 12627	ASME B16.25
LENGHTS (BW)	EN 12982 (Series 63) / API-6D	ASME B16.10 / API-6D



MATERIALS

DN	BODY	FLANGE END	BUTT-WELD END	BALL	STEM	BACK-UP RING	SEAT	BACK-UP RING SEALING	STEM SEALING	BOLTS & NUTS
25	P355NH P355QH A350LF2	P355NH P355QH A350LF2	P355NH P355NL1	A350 LF2 + EN	X20Cr13	SS	HNBR FKM	HNBR FKM Graphite	HNBR FKM PTFE PTFE+C Graphite	42CrMo4 A193B7M A1942HM
50										
80										
100						CS + EN				
150										
200										
250										
300										

DIMENSIONS

DN	PN / CL	TYPE	TYPE OF CONNECTION	D [mm]	L [mm]	B [mm]	I [mm]	D1 [mm]	T [mm]	WEIGHT [kg]
25	16, 25, 40	AH-2c-SB	FF	25	160	89	53	-	-	7,8
	150				127					7,8
	300				165					7,8
	16, 25, 40, 150, 300	AH-2cp-SB	BW	165	35	5	3,1			
50	16, 25, 40	AH-2c-SB	FF	49	203	105	92	-	-	18
	150				178					14
	300				216					18
	16, 25, 40, 150, 300	AH-2cp-SB	BW	216	60,3	4	11			
80	16, 25, 40	AH-2c-SB	FF	74	241	132	109	-	-	40
	150				203					26
	300				241					41
	16, 25, 40, 150, 300	AH-2cp-SB	BW	283	88,9	5	25			
100	16	AH-11c-SB	FF	100	300	148	130	-	-	53
	25, 40				300					55
	150				229					48
	300				305					65
	16, 25, 40, 150, 300	AH-12c-SB	BW	305	114,3	5,6	37			
150	16	AH-11c-SB	FF	150	394	261	317	-	-	92
	25, 40				394					104
	150				403					99
	300				457					117
	16, 25, 40	AH-12c-SB	BW	457	168,3	7,1	97			
200	16	AH-14c-SB	FF	201	457	309	350	-	-	174
	25									177
	40									189
	150									189
	300									213
	16, 25, 40, 150, 300	AH-15c-SB	BW	521	219,1	8,8	156			
250	16	AH-14c-SB	FF	252	533	380	454	-	-	315
	25									331
	40									351
	150									332
	300									371
	16, 25, 40, 150, 300	AH-15c-SB	BW	559	273	10	288			
300	16	AH-14c-SB	FF	303	610	415	488	-	-	537
	25									555
	40									584
	150									571
	300									621
	16, 25, 40, 150, 300	AH-15c-SB	BW	635	323,9	10	505			

(*) dimensions D1 and t to agree

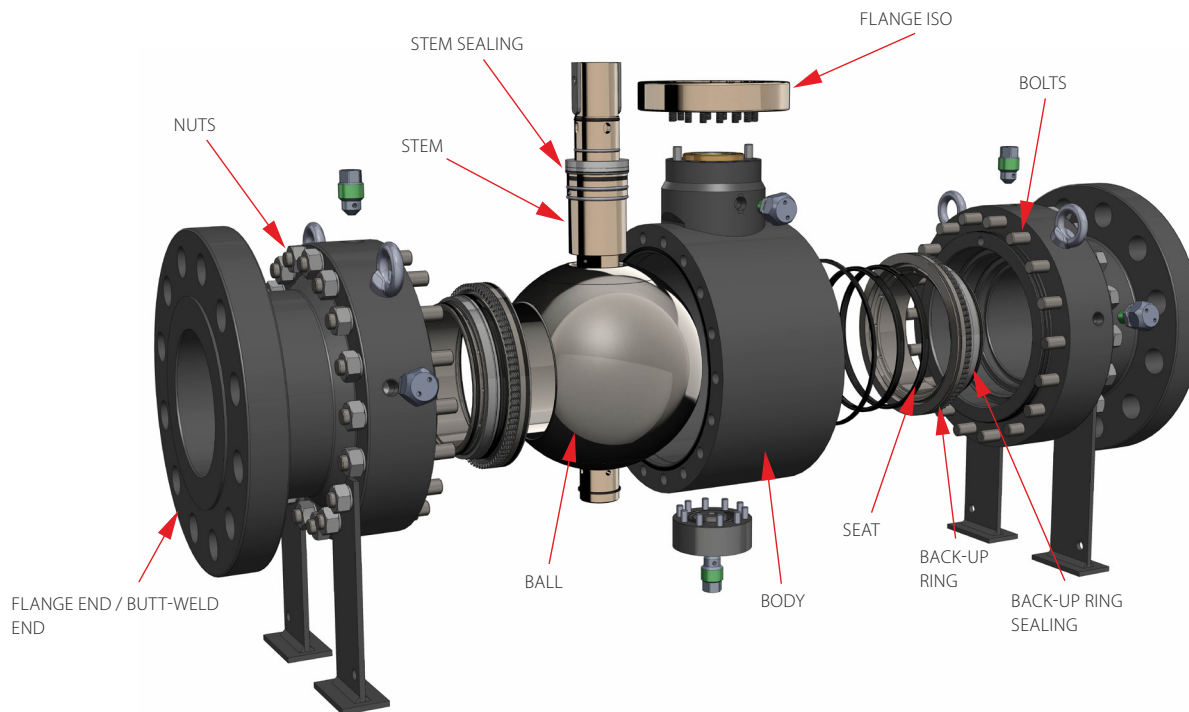
SPLIT BODY BALL VALVE

PN63 | PN100

CL 600

DESCRIPTION

	PN	CL
FLANGES (FF)	EN 1092-1	ASME B16.5 / EN 1759-1
LENGHTS (FF)	API-6D	ASME B16.10 / API-6D
BUTT-WELDING ENDS (BW)	EN 12627	ASME B16.25
LENGHTS (BW)	API-6D	ASME B16.10 / API-6D



MATERIALS

DN	BODY	FLANGE END	BUTT-WELD END	BALL	STEM	BACK-UP RING	SEAT	BACK-UP RING SEALING	STEM SEALING	BOLTS & NUTS
25	P355NH P355QH A350LF2	P355NH P355QH A350LF2	P355NH P355NL1	A350 LF2 + EN	X20Cr13	SS	HNBR FKM	HNBR FKM Graphite	HNBR FKM PTFE PTFE+C Graphite	42CrMo4 A193B7M A1942HM
50										
80										
100						CS + EN				
150										
200										
250										
300										

DIMENSIONS

DN	PN / CL	TYPE	TYPE OF CONNECTION	D [mm]	L [mm]	B [mm]	I [mm]	D1 [mm]	T [mm]	WEIGHT [kg]
25	63	AH-3-SB	FF	25	216	89	53	-	-	15
	100									15
	600									15
	63, 100	AH-3p-SB	BW					35	5	11
50	63	AH-3-SB	FF	49	292	105	92	-	-	22
	100									23
	600									23
	63, 100, 600	AH-3p-SB	BW					60,3	5	11
80	63	AH-3-SB	FF	74	356	132	109	-	-	37
	100									39
	600									50
	63, 100, 600	AH-3p-SB	BW					88,9	6,3	27
100	63	AH-3-SB	FF	100	432	148	130	-	-	67
	100									71
	600									84
	63, 100, 600	AH-3p-SB	BW					114,3	7,1	47
150	63	AH-4-SB	FF	150	495	261	317	-	-	188
	100				559					218
	600				228					
	63	AH-4p-SB	BW	495	168,3	8	134			
	100, 600			559				136		
200	63	AH-4-SB	FF	201	597	309	350	-	-	342
	100				660					390
	600				396					
	63	AH-4p-SB	BW	597	219,1	8,8	244			
	100, 600			660				246		
250	63	AH-4-SB	FF	252	673	380	454	-	-	606
	100				787					746
	600				761					
	63	AH-4p-SB	BW	673	273	10	481			
	100, 600			787				490		
300	63	AH-4-SB	FF	303	762	415	488	-	-	844
	100				838					986
	600				961					
	63	AH-4p-SB	BW	762	323,9	12,5	686			
	100, 600			838				694		

(*) dimensions D1 and t to agree

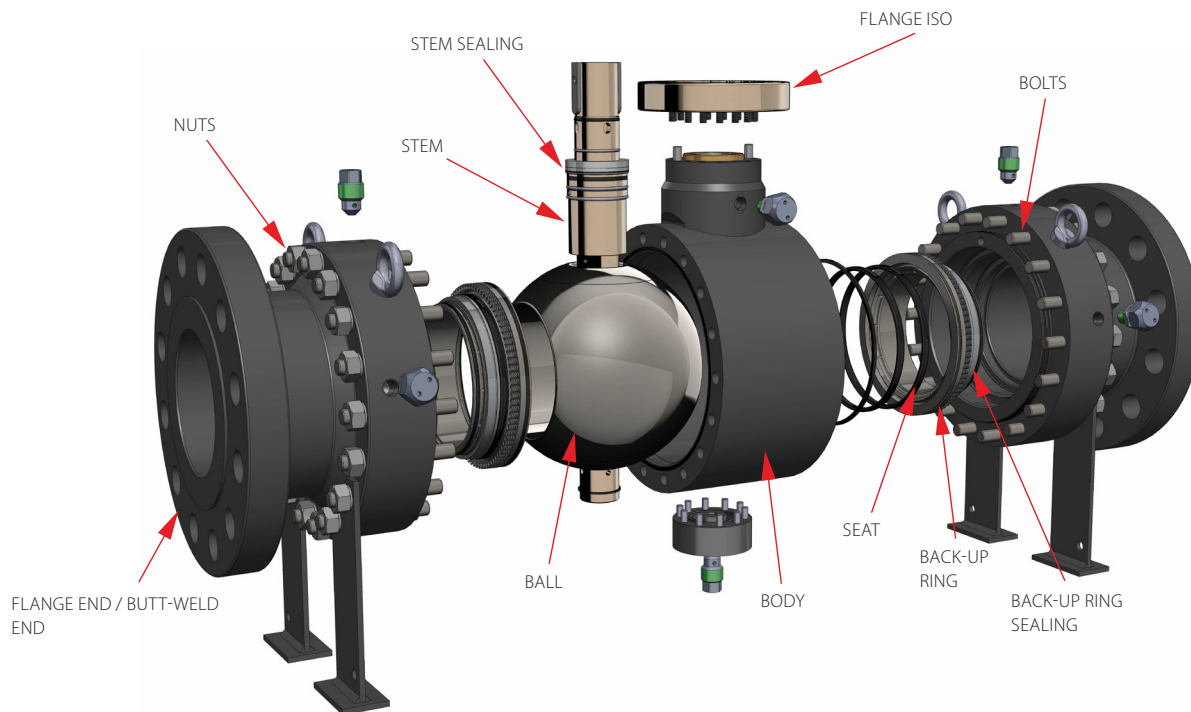
SPLIT BODY BALL VALVE

PN160

CL 900

DESCRIPTION

	PN	CL
FLANGES (FF)	EN 1092-1	ASME B16.5 / EN 1759-1
LENGHTS (FF)	API-6D	ASME B16.10 / API-6D
BUTT-WELDING ENDS (BW)	EN 12627	ASME B16.25
LENGHTS (BW)	API-6D	ASME B16.10 / API-6D



MATERIALS

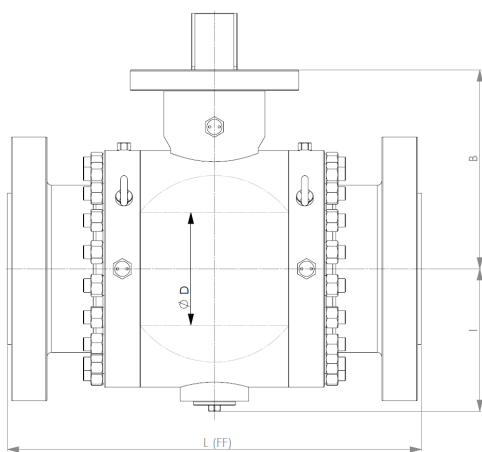
DN	BODY	FLANGE END	BUTT-WELD END	BALL	STEM	BACK-UP RING	SEAT	BACK-UP RING SEALING	STEM SEALING	BOLTS & NUTS
25	P355NH P355QH A350LF2	P355NH P355QH A350LF2	P355NH P355NL1	A350 LF2 + EN	X20Cr13	SS	HNBR FKM	HNBR FKM Graphite	HNBR FKM PTFE PTFE+C Graphite	42CrMo4 A193B7M A1942HM
50										
80										
100						CS + EN				
150										
200										
250										
300										

DIMENSIONS

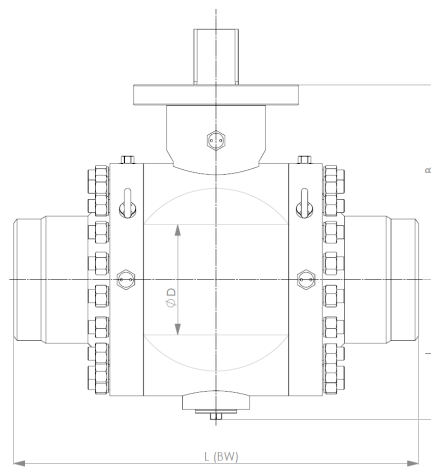
DN	PN / CL	TYPE	TYPE OF CONNECTION	D [mm]	L [mm]	B [mm]	I [mm]	D1 [mm]	T [mm]	WEIGHT [kg]
25	160	AH-3-SB	FF	25	216	89	53	-	-	17
	900							-	-	18
	160, 900	AH-3p-SB	BW					35	5	13
50	160	AH-3-SB	FF	49	368	116	92	-	-	35
	900							-	-	38
	160, 900	AH-3p-SB	BW					60,3	5	27
80	160	AH-3-SB	FF	74	381	135	113	-	-	57
	900							-	-	61
	160, 900	AH-3p-SB	BW					88,9	6,3	43
100	160	AH-3-SB	FF	100	457	164	133	-	-	92
	900							-	-	98
	160, 900	AH-3p-SB	BW					114,3	7,1	69
150	160	AH-4-SB	FF	150	610	281	204	-	-	265
	900							-	-	271
	160, 900	AH-4p-SB	BW					168,3	8	190
200	160	AH-4-SB	FF	201	737	355	254	-	-	508
	900							-	-	520
	160, 900	AH-4p-SB	BW					219,1	8,8	364
250	160	AH-4-SB	FF	252	838	440	484	-	-	698
	900							-	-	726
	160, 900	AH-4p-SB	BW					273	10	508
300	160	AH-4-SB	FF	303	965	475	518	-	-	982
	900							-	-	996
	160, 900	AH-4p-SB	BW					323,9	12,5	697

(*) dimensions D1 and t to agree

FF - FLANGE ENDS



BW - BUTT-WELDING ENDS



MAIN FEATURES

		MEDIUM	
		GAS	FUELS
TEMPERATURE RANGE	-40 ÷ +100°C	✓	✓
	-40 ÷ +150°C	OPTION	OPTION
CONNECTION TYPE	FF	✓	✓
	BW	✓	✓
VALVE BORE	FULL	✓	✓
	REDUCED	OPTION	OPTION
BALL TYPE	TRUNNION MOUNTED	✓	✓
SEAT	PMSS	✓	✓
	METAL - METAL	OPTION	OPTION
DBB		✓ DN≥50	✓ DN≥50
SINGLE PISTON EFFECT (SPE)		✓ DN<80	✓
DOUBLE PISTON EFFECT (DPE)		✓ DN≥80	-
ANTI-BLOW OUT STEM		✓	✓
ANTISTATIC PROTECTION EN 12666 / API-6D		✓	✓
FIRE SAFE API 607 / EN ISO 10497		OPTION	OPTION
INJECTION SYSTEM	BACK UP RINGS	✓ DN≥100	✓ DN≥100
	STEM	✓ DN≥150	✓ DN≥150
NACE MR 0175 / EN ISO 15156		OPTION	OPTION

BROEN OIL & GAS

Stara Droga 8, 62-002 Suchy Las, POLAND
 contact@broen.com, www.broen.com